

All Stainless Steel Low Pressure Gauge

Model: PRSSM

Feature of Product

- Measuring small positive and negative pressure changes
- Lower than 0.5kg/cm²
- 304 stainless steel case
- The wetted part is 316 stainless steel



Product Specification

Nominal size

2.5"、4"、6"

Thread size

1/4"、3/8"、1/2"

Thread type

PT、PF、NPT

Thread material

316 stainless steel

Pointer

Black aluminum alloy

Case

304 stainless steel

AccuracyASME B40.1 grade B $\pm 3/2/3\%$ **Movement**

316 stainless steel

Window

2.5": Acrylic; 4", 6": glass

DialAluminum alloy
(Single or double scale)**Permissible temperature**

-20°C~150°C

Product Specification

Permissible pressure

For stable pressure source: 75% F.S.

For unstable pressure pulse: 60% F.S.D.

Pressure range

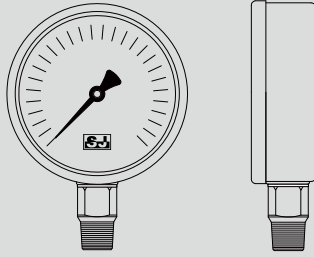
-5000mmAq Vac. ~ 5000mmAq(mmH₂O)

Positive pressure minimum 300mmAq

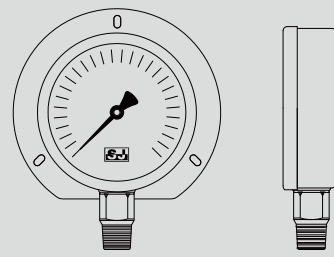
Negative pressure minimum 300mmAq

Type of Mounting

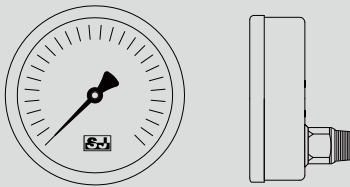
A- Bottom mount



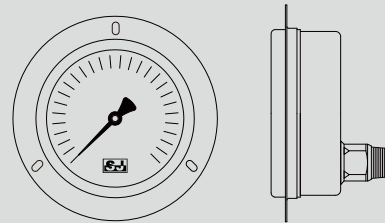
B- Bottom mount with flange



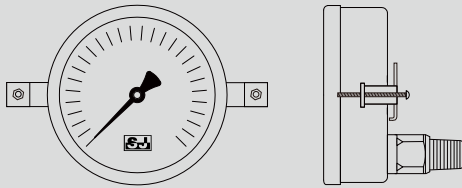
ADL- Low back mount



BDL- Low back mount with flange



UDL- Low back mount with U-clamp



NS \ Code	A	B	ADL	BDL	UDL
2.5"	✓	-	-	-	-
4"	✓	✓	✓	✓	✓
6"	✓	✓	✓	✓	✓

Codes for Custom Order Configurations

Ex:	PRSSM -	A	63	2	PT	10kg	N	+A
Type of mounting		A						
A	-	Bottom mount						
B	-	Bottom mount+flange						
ADL	-	Low back mount						
BDL	-	Low back+flange						
UDL	-	Low back+U-clamp						
Nominal size			63					
63	-	2.5"						
75	-	3"						
100	-	4"						
OT	-	Other						
Thread size				2				
2	-	1/4"						
3	-	3/8"						
4	-	1/2"						
+OT	-	Other						
Thread type					PT			
PT	-	PT						
PF	-	PF						
NPT	-	NPT						
Pressure range (including unit)						10kg		
Whether to specify the unit							N	
Y	-	Yes, specify the unit above						
N	-	No, accept the other unit						
Other demands								+A
+A	-	None						
+B	-	Additional order details						

For any changes to the specifications of this catalogue , the latest version shall prevail.

Copyright © 04/2020 by SIN JIA ENTERPRISE COMPANY LIMITED. All rights reserved.

SIN JIA ENTERPRISE COMPANY LIMITED

TEL:+886-2-2550-4512

FAX:+886-2-2550-4510

info@sinjiagauge.com

www.sj-gauge.com

No.3, Ln. 71, Chifeng St., Datong Dist., Taipei City 103, Taiwan

