

## Stainless Steel Case Pressure Gauge

Model: PRS

## Feature of Product

- Best choice for outdoor installation
- The process connection is made of copper and can be plated
- Suitable for liquids or gases that are not aggressive to brass



## Product Specification

**Nominal size**

1.5"、2"、2.5"、3"、4"

**Thread size**

1/8"、1/4"、3/8"、1/2"

**Thread type**

PT、PF、NPT

**Pointer**

Black aluminum alloy

**Pressure range**

30 inHg Vac.~15000 psi

76 cmHg Vac. ~1000 kg/cm<sup>2</sup>**Case**

304 stainless steel

**Accuracy**

1.5"、2":

ASME B40.1 Level B  $\pm 3/2/3\%$ 

2.5"、3"、4":

 $\pm 1.5\%F.S.$ **Thread material**

Brass or plating brass

**Movement**

Brass

**Window**

PC, glass can be customized

**Dial**

Aluminum alloy

(single or double scale)



## Product Specification

### **Permissible temperature range**

Ambient:

-40°C~60°C (without liquid-filled)

-20°C~60°C (with liquid-filled)

Medium: +60°C (with liquid-filled)

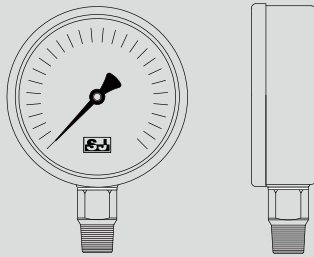
### **Permissible pressure range**

For stable pressure source: 75% F.S.

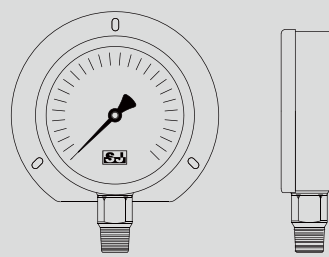
For unstable pressure pulse: 60% F.S.D.

# Type of Mounting

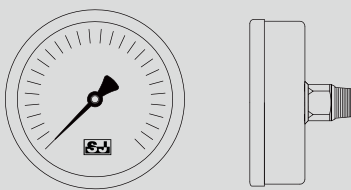
A-Bottom mount



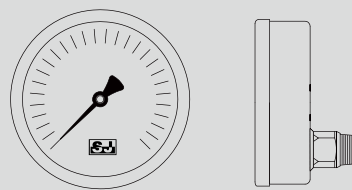
B-Bottom mount with flange



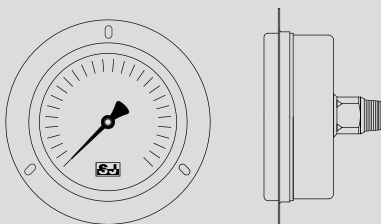
ADC-Central back mount



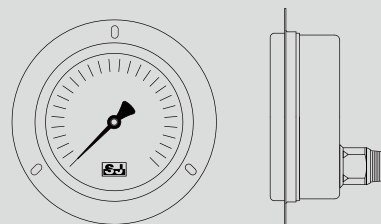
ADL-Low back mount



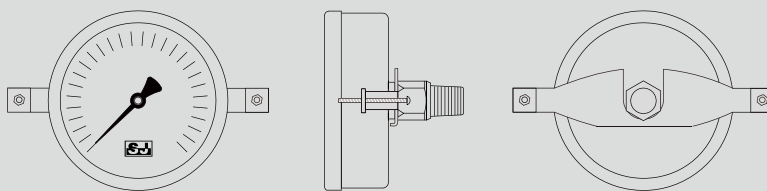
BDC-Central back mount with flange



BDL-Low back mount with flange



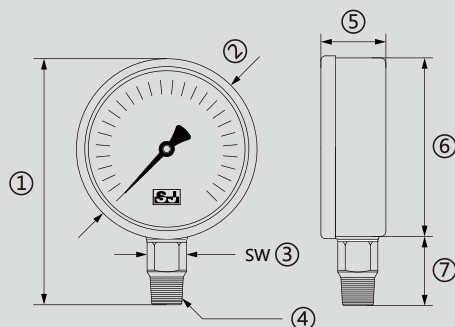
UDC-Central back mount with U-clamp



NS \ Code	A	B	ADC	ADL	BDC	BDL	UDC
1.5"	✓	—	✓	—	✓	—	✓
2"	✓	—	✓	—	✓	—	✓
2.5"	✓	✓	✓	—	✓	—	✓
3"	✓	✓	✓	—	✓	—	✓
4"	✓	✓	✓	✓	✓	✓	✓

# Dimensions

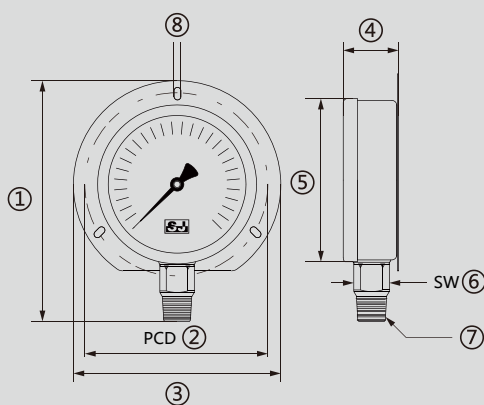
## A- Bottom mount



Unit: mm

NS	①	②	③	④	⑤	⑥	⑦
1.5"	60	48	12	1/8"	28	41.8	16
2"	78.5	57	14	1/4"	29.5	50.5	25
2.5"	92	71	14	1/4"	34	63	26
3"	118.2	85.2	18	3/8"	32	77.5	30
4"	140	110	22	1/2"	45	98.5	38

## B- Bottom mount with rear flange

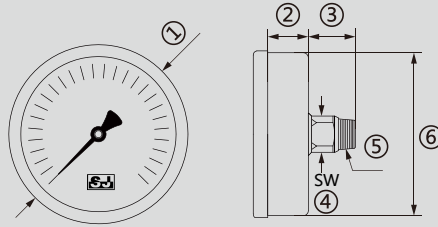


Unit: mm

NS	①	②	③	④	⑤	⑥	⑦	⑧
2.5"	107	82.4	99.5	34	71	14	1/4"	6*4.4
3"	111.5	94	106.1	33	82.5	18	3/8"	6*7.5
4"	150.5	117	130	46.5	110	22	1/2"	4*3

# Dimensions

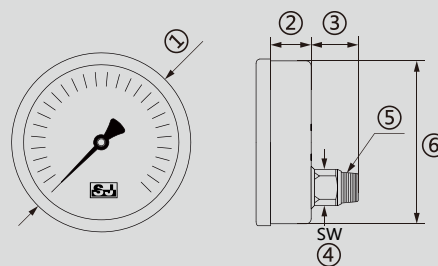
## ADC- Central back mount



Unit: mm

NS	①	②	③	④	⑤	⑥
1.5"	48	22	16	12	1/8"	41.8
2"	57	22	21	14	1/4"	50.5
2.5"	71	25	26	14	1/4"	63.5
3"	85.1	32	30	18	3/8"	77.5
4"	110	28	38	22	1/2"	98.5

## ADL- Low back mount with flange

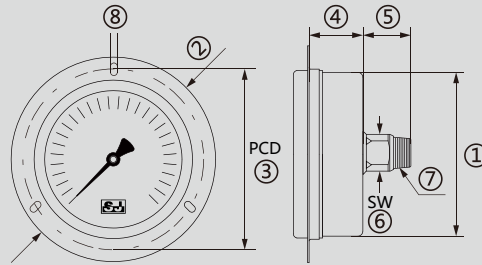


Unit: mm

NS	①	②	③	④	⑤	⑥
4"	110	28	38	22	1/2"	98.5

# Dimensions

BDC- Central back mount with flange

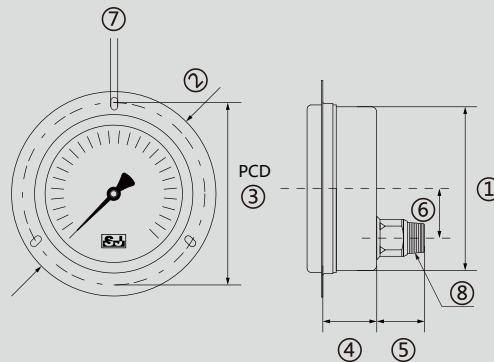


Unit: mm

NS	①	②	③	④	⑤	⑥	⑦	⑧
1.5"	44	62.7	55.5	22	16	12	1/8"	4*3
2"	52.5	71.5	64.5	21	22	14	1/4"	4*4
2.5"	65	87.5	80.5	25	26	14	1/4"	4.5*3
3"	80	110	96	23	30	18	1/4"	4.5*3
4"	101	132.5	117	28	38	22	1/2"	6*3

\*① The width of the overlap between the edge and the shell is included

BDL- Low back mount with flange

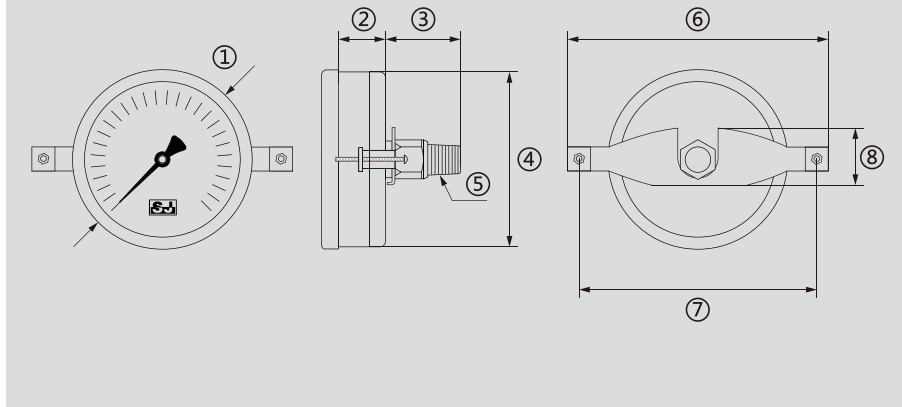


Unit: mm

NS	①	②	③	④	⑤	⑥	⑦	⑧
4"	101	132.5	117	30	35	22.5	8*3	1/2"

# Dimensions

UDC- Back mount with U-clamp



Unit: mm

NS	①	②	③	④	⑤	⑥	⑦	⑧
1.5"	48	22	21	41.8	1/4"	70	62	27.5
2"	57	22	21	50.5	1/4"	80	72	28
2.5"	71	25	26	63.5	1/4"	96	88	28.5
3"	85.1	32	35	80	1/4"	135	127	44
4"	110	28	38	98.5	1/2"	135	127	44

# Codes for Custom Order Configurations

Ex:	PRS -	A	63	2	PT	10kg	N	+N	+A
<b>Type of mounting</b>		A							
A	- Bottom mount								
B	- Bottom+rear flange								
ADC	- Central back mount								
ADL	- Low back mount								
BDC	- Central back+flange								
BDL	- Low back mount+flange								
UDC	- Back mount+U-clamp								
<b>Nominal size</b>			63						
40	- 1.5"								
50	- 2"								
63	- 2.5"								
75	- 3"								
100	- 4"								
OT	- Other								
<b>Thread size</b>				2					
1	- 1/8"								
2	- 1/4"								
3	- 3/8"								
4	- 1/2"								
+OT	- Other								
<b>Thread type</b>					PT				
PT	- PT								
PF	- PF								
NPT	- NPT								
<b>Pressure range (including unit)</b>						10kg			
<b>Whether to specify the unit</b>							N		
Y	- Yes, specify the unit above								
N	- No, accept the other units								
<b>Whether need filling liquid</b>								+N	
YG	- Glycerin								
YS	- Silicone								
+N	- None								
<b>Other demands</b>									+A
+A	- None								
+B	- Additional order details								



For any changes to the specifications of this catalogue, the latest version shall prevail.

Copyright © 07/2020 by SIN JIA ENTERPRISE COMPANY LIMITED. All rights reserved.

SIN JIA ENTERPRISE COMPANY LIMITED

TEL:+886-2-2550-4512

FAX:+886-2-2550-4510

info@sinjiagauge.com

www.sj-gauge.com

No.3, Ln. 71, Chifeng St., Datong Dist., Taipei City 103, Taiwan

