

# Stainless Steel Siphon Tube

Model: PRA-SP

## Product Description

- Siphons protect from sudden pressure changes and excessive heat
- Thread size and tube thickness can be customized
- More than six types available for various installation environments



## Product Specification

**Process connection (upper/lower)**

1/4", 3/8", 1/2";  
PT, G, NPT, M

**Material**

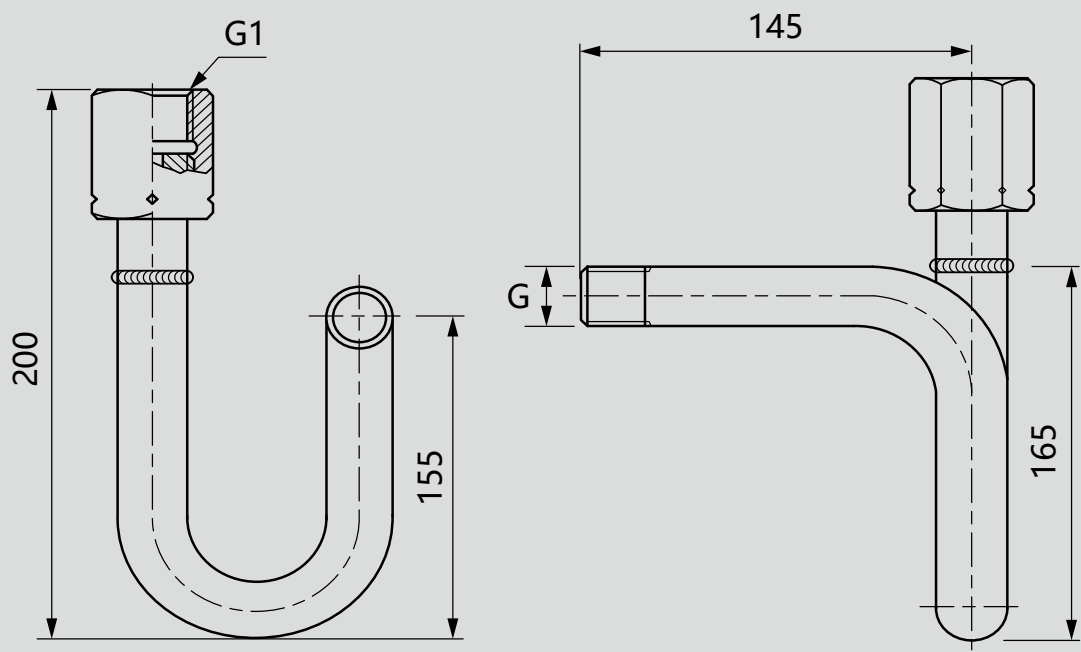
Carbon steel, 304 SS, 316 SS

**Connection designs**

Male thread, male nut, union nut,  
welded type (without thread)

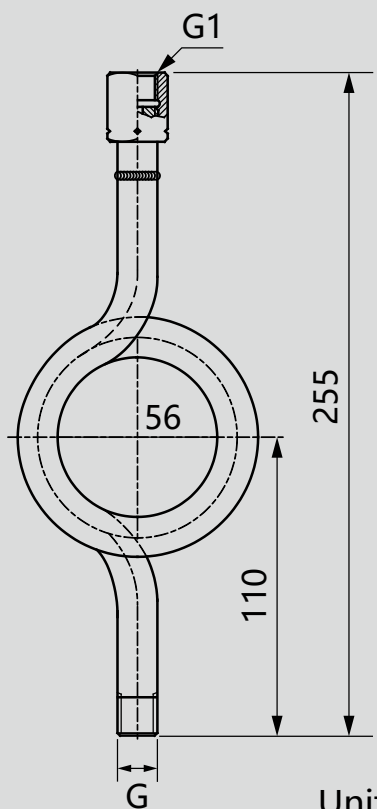
Dimensions

Type A



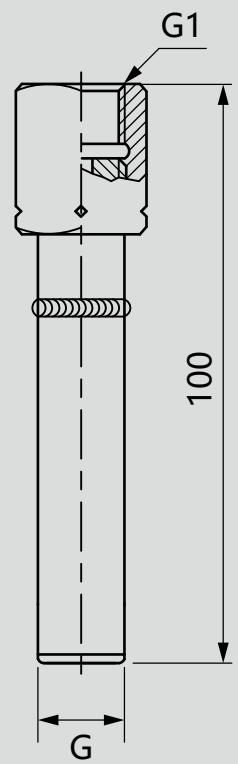
Unit: mm

Type C



Unit: mm

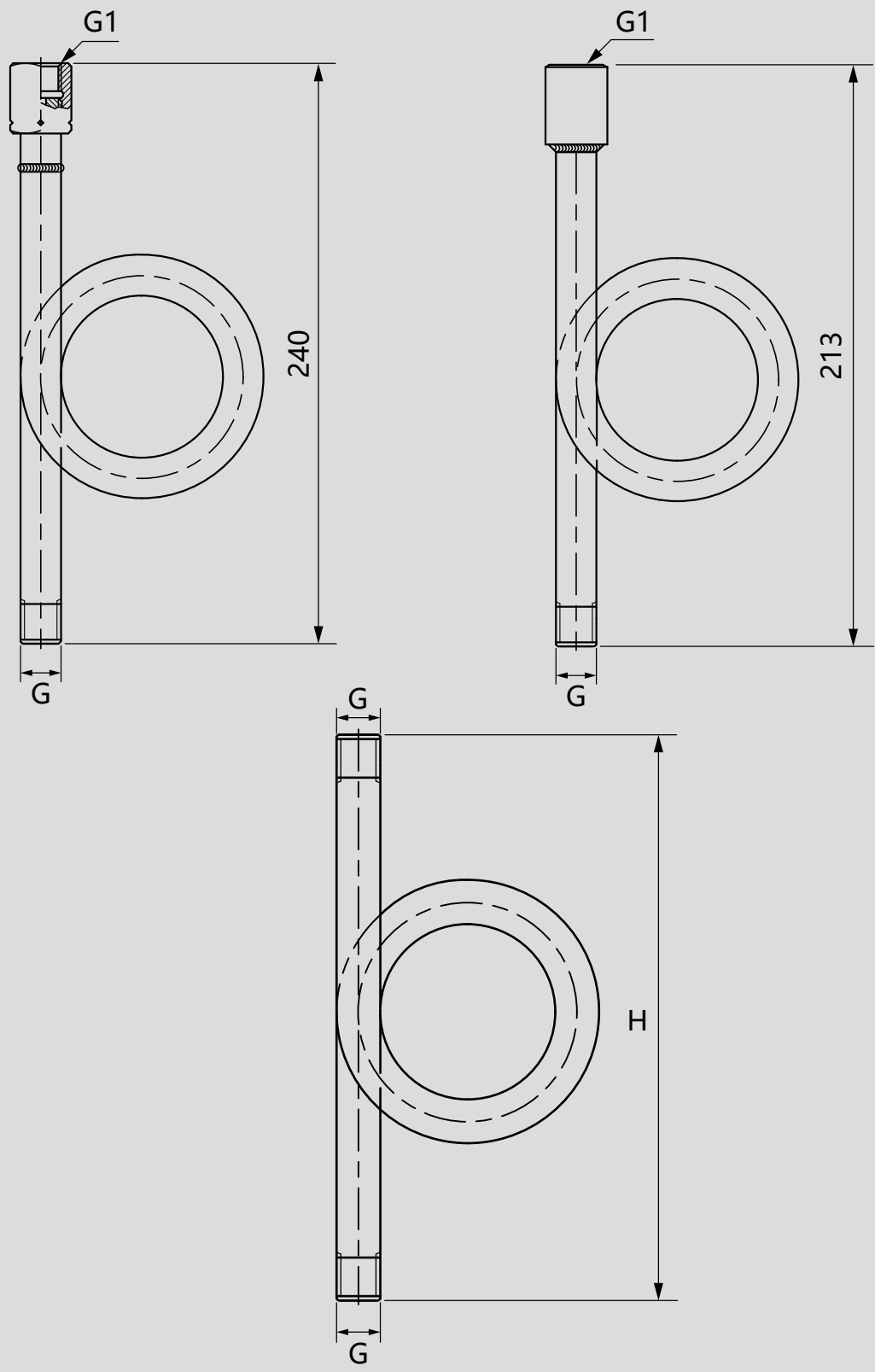
Type I



Unit: mm

Dimensions

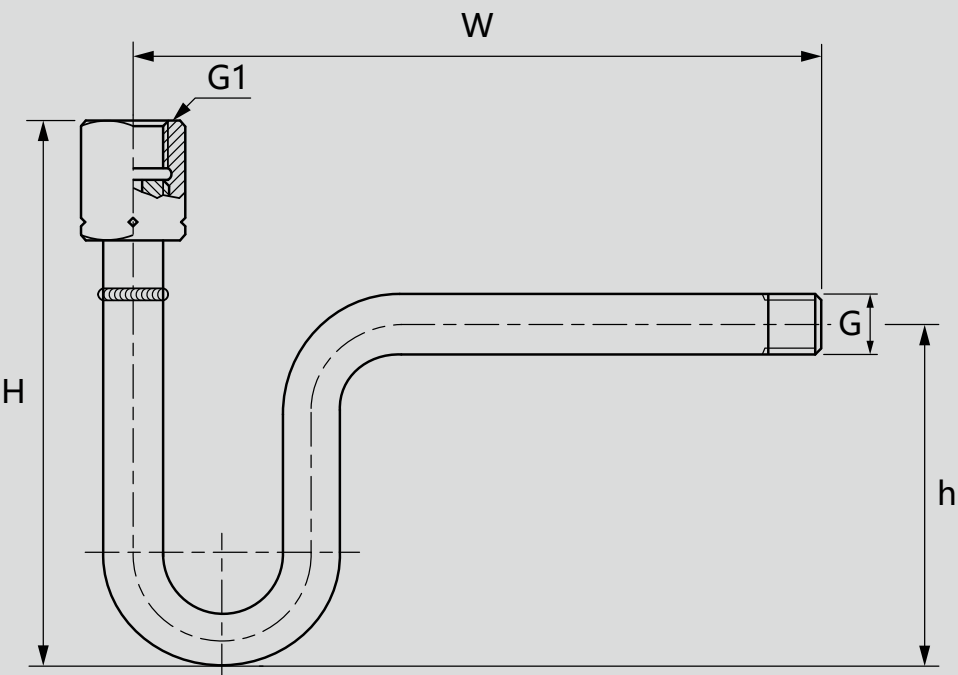
Type G



Unit: mm

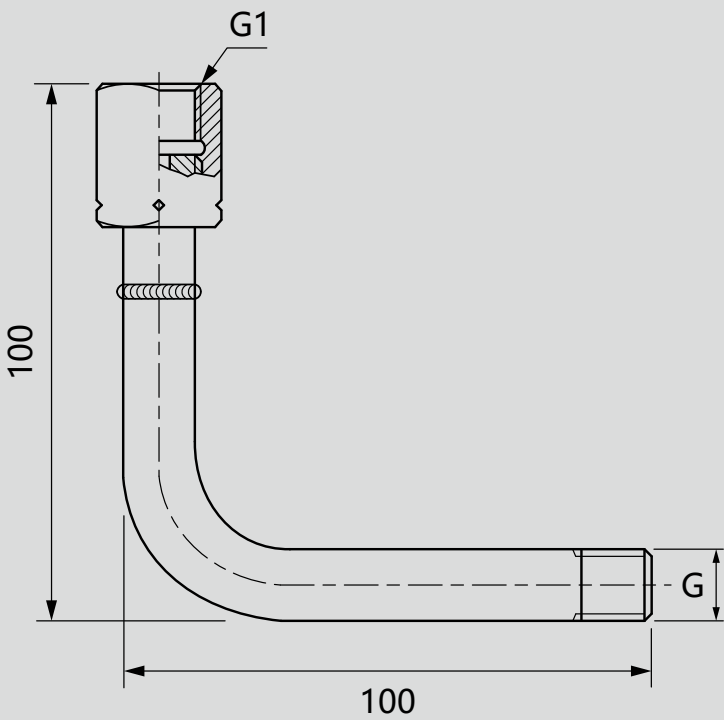
Dimensions

Type E



Unit: mm

Type L



Unit: mm

※ **Ordering information**

Model / Type / Process connection (upper/lower) / Connection designs / Material / Options

For any changes to the specifications of this catalogue, the latest version shall prevail.

SIN JIA ENTERPRISE COMPANY LIMITED

TEL: +886-2-2550-4512

FAX: +886-2-2550-4510

info@sinjiagauge.com

www.sj-gauge.com

No.3, Ln. 71, Chifeng St., Datong Dist., Taipei City 103, Taiwan

